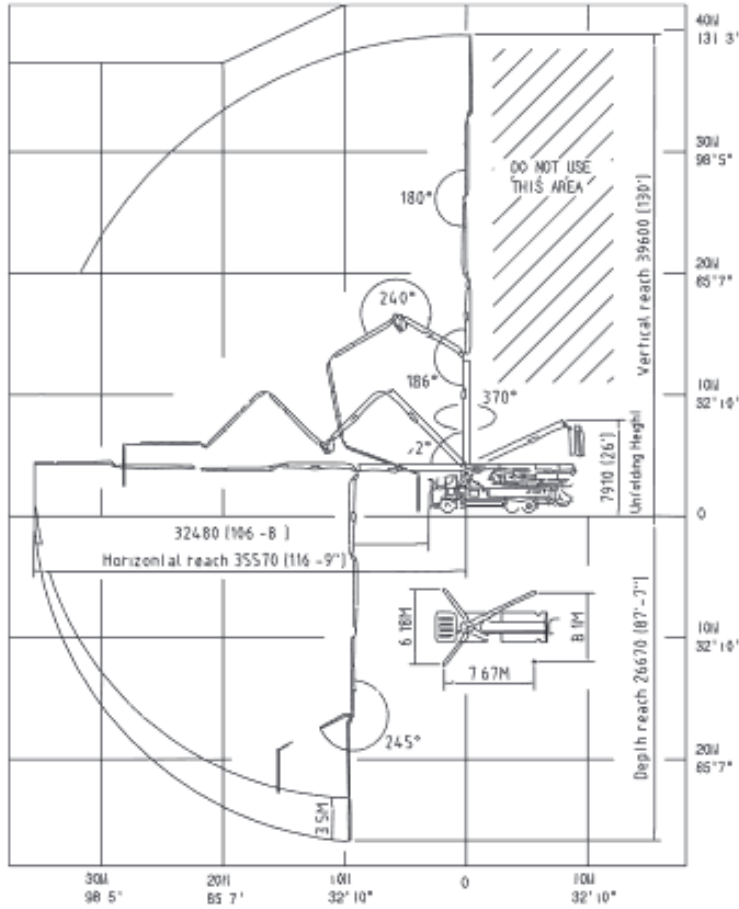


40m Concrete Placement Boom

Plant ID: ERCP2-40



Boom Specifications	
Model	KCP40RX170-058
Delivery Line	125/5"
Arms	4
Folding System	R
Vertical Reach	39.6m
Horizontal Reach	35.6m
Depth of Reach	26.6m
Unfold Height	10m
End Hose Length Max	4m
End Hose Size Max	4"
Max. Bearing Pressure	225kN
Weight	32 tonnes
Outrigger Footprint	7.6m x 8.1m
Max. Hydraulic Pressure	380 Bar
Max. Concrete Delivery Pressure	85 Bar
Max. Wind Speed for Operation	74km/hour

