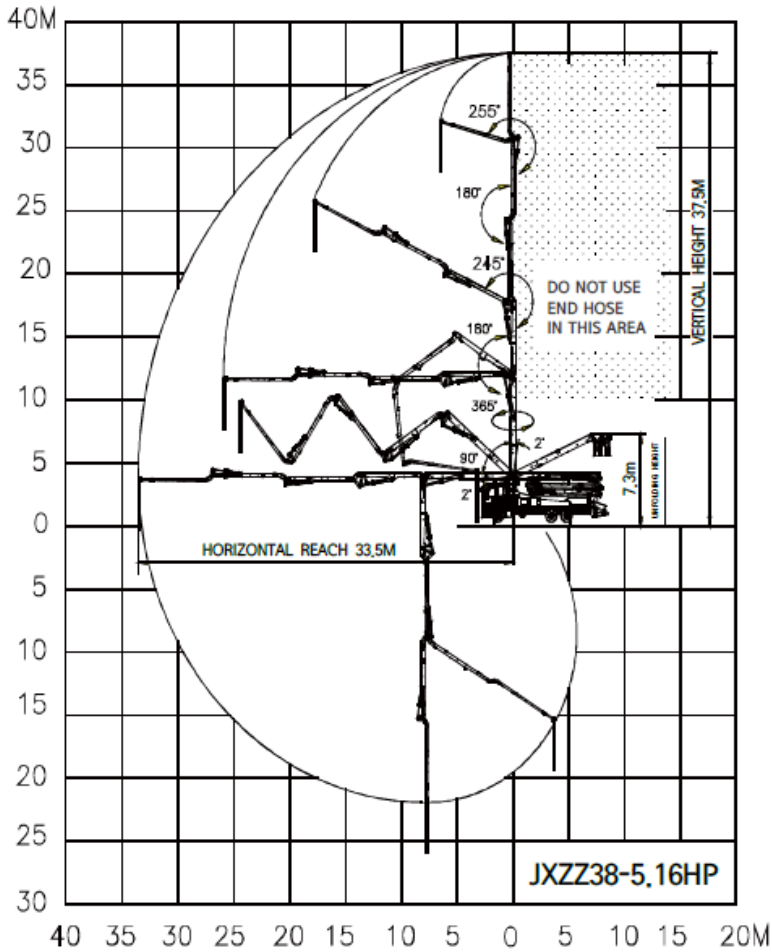
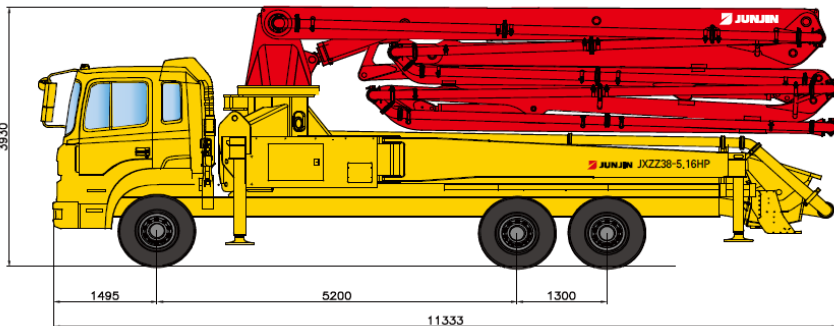


38m Concrete Placement Boom

Plant ID: ERCP5-38



Boom Specifications	
Model	JXZZ38-5.18HP
Delivery Line	DN 125 / 5"
Arms	5
Folding System	Z & Z Type
Vertical Reach	37.5m
Horizontal Reach	33.5m
Depth of Reach	26m
Unfold Height	7.3m
End Hose Length Max	4m
End Hose Size Max	4"
Max. Bearing Pressure	250kN
Weight	31 tonne
Outrigger Footprint	7.8m x 7.8m
Max. Hydraulic Pressure	350 Bar
Max. Concrete Delivery Pressure	85 Bar
Max. Wind Speed for Operation	74km/hr



* Remark : Standard specification with HD260. Dimension depends on truck specification.

