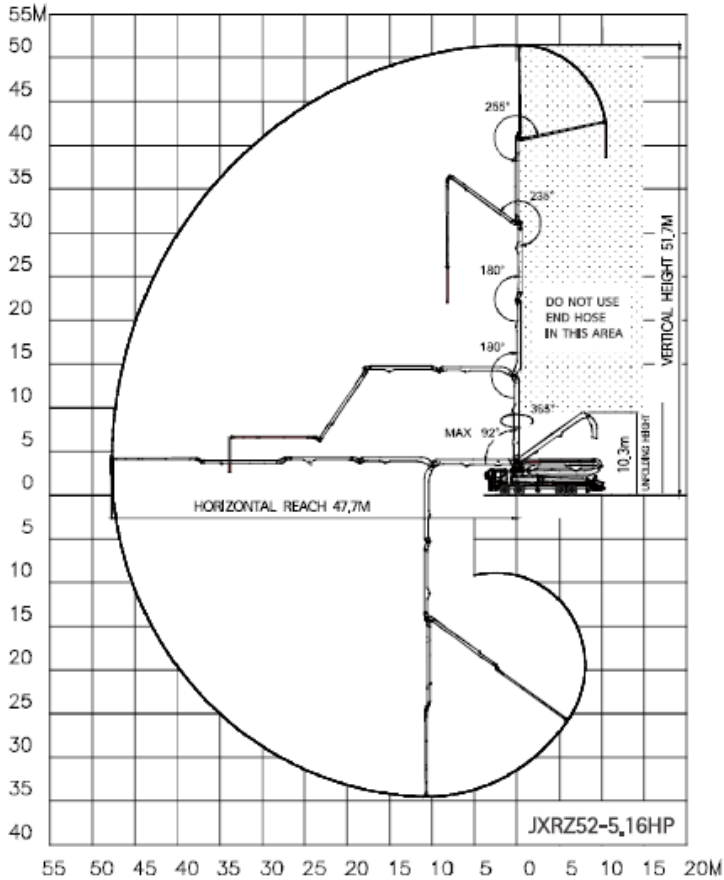




# 52m Concrete Placement Boom

Plant ID: ERCP4-52



Boom Specifications	
Model	JXRZ52-5.18HP
Delivery Line	DN 125/5"
Arms	4
Folding System	RZ
Vertical Reach	51.7m
Horizontal Reach	47.7m
Depth of Reach	35m
Unfolding Height	10.3m
End Hose Length Max	4m
End Hose Size Max	4"
Max Delivery Pressure	85bar
Max Hydraulic Pressure	380bar
Max Bearing Pressure	300kN
Weight	42 tonnes
Outrigger footprint	10.66m x 12.18m
Max wind speed for operation	61km/hour

