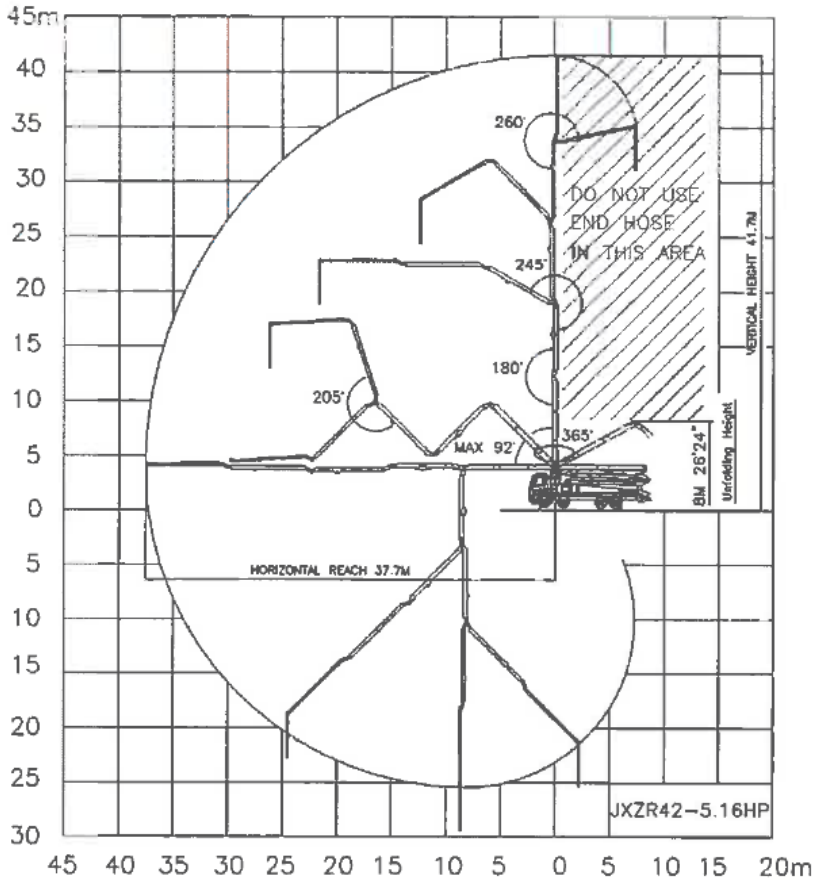




42m Concrete Placement Boom

Plant ID: ERCP1-42



Boom Specifications	
Model	JXZR42.5
Delivery Line	125/5"
Arms	4
Folding System	ZR
Vertical Reach	41.7m
Horizontal Reach	37.7m
Depth of Reach	30m
Unfold Height	8m
End Hose Length	4m
Max. End Hose Size	4"
Max. Bearing Pressure	200kN
Weight	33 tonnes
Outrigger Footprint	8.1m x 8.6m
Max. Hydraulic Pressure	350 kPa (Bar)
Max. Concrete Delivery Pressure	85 kPa (Bar)
Max. Wind Speed for Operation	61km/hour

