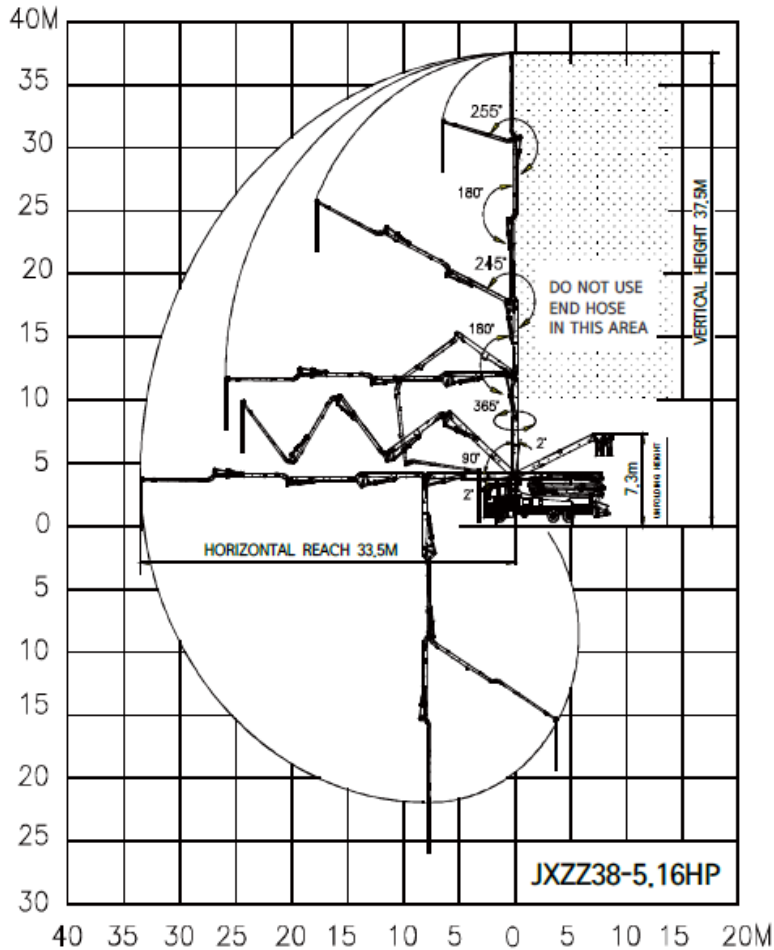
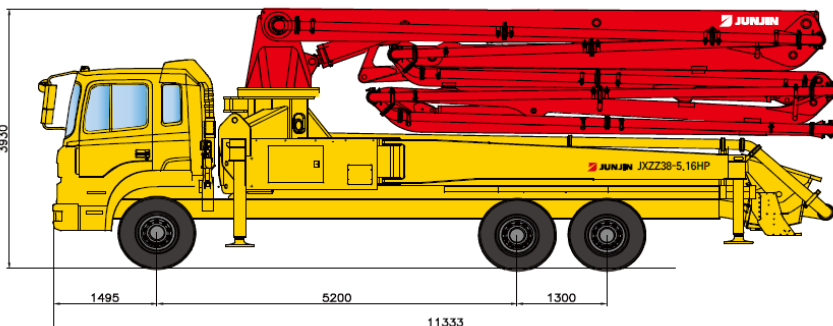


# 38m Concrete Placement Boom

Plant ID: ERCP5-38



| Boom Specifications             |               |
|---------------------------------|---------------|
| Model                           | JXZZ38-5.18HP |
| Delivery Line                   | DN 125 / 5"   |
| Arms                            | 5             |
| Folding System                  | Z & Z Type    |
| Vertical Reach                  | 37.5m         |
| Horizontal Reach                | 33.5m         |
| Depth of Reach                  | 26m           |
| Unfold Height                   | 7.3m          |
| End Hose Length Max             | 4m            |
| End Hose Size Max               | 4"            |
| Max. Bearing Pressure           | 250kN         |
| Weight                          | 31 tonne      |
| Outrigger Footprint             | 7.8m x 7.8m   |
| Max. Hydraulic Pressure         | 350kPa (Bar)  |
| Max. Concrete Delivery Pressure | 87kPa (Bar)   |
| Max. Wind Speed for Operation   | 74km/hr       |



\* Remark : Standard specification with HD260. Dimension depends on truck specification.

