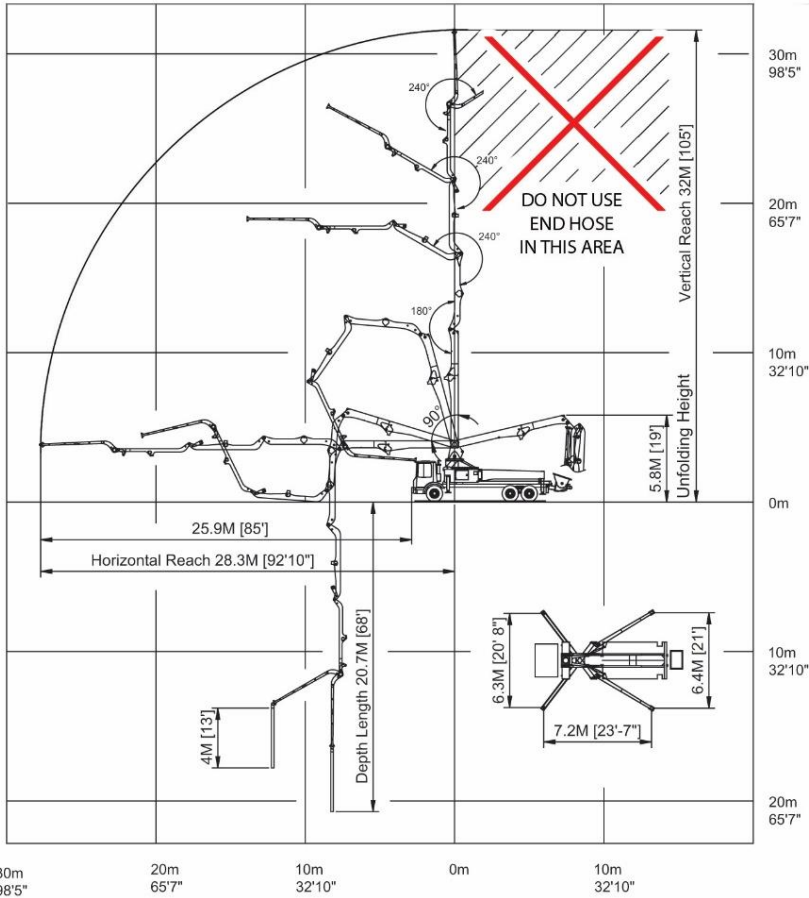


# 33m Concrete Placement Boom

Plant ID: ERCP3-32



Boom Specifications	
Model	KCP33ZX170/105
Delivery Line	125/5"
Arms	4
Folding System	Z
Vertical Reach	33m
Horizontal Reach	28.3m
Depth of Reach	20.7m
Unfold Height	5.8m
End Hose Length Max	4m
End Hose Size Max	4"
Maximum Bearing Pressure	165kN
Weight	30 tonnes
Outrigger Footprint	7.2m x 6.4m
Max. Hydraulic Pressure	350kPa (bar)
Max. Concrete Delivery Pressure	69kPa (bar)
Max. Wind Speed for Operation	74km/hour

