

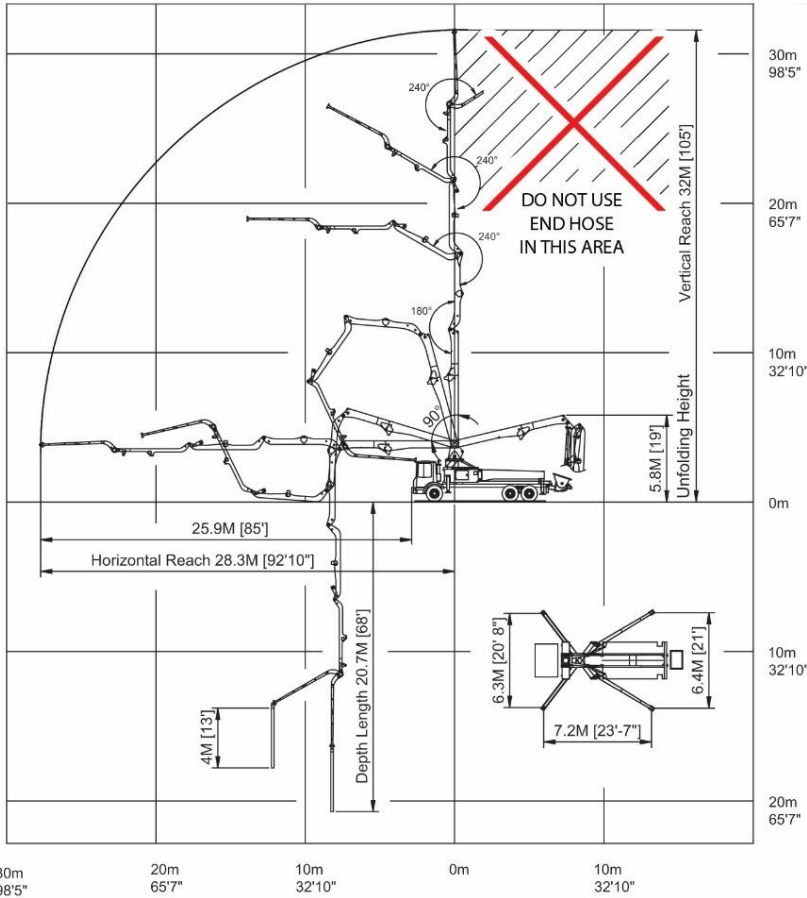
33m Concrete Placement Boom

Plant ID: ERCP3-32



Easy Reach Concrete Pumping

PO Box 8209
Garbutt QLD 4812
Phone 0400 936 868
Email admin@easyreachconcretepumping.com.au
ABN 61 158 149 305 / ACN 158 149 305



Boom Specifications	
Model	KCP33ZX170/105
Delivery Line	125/5"
Arms	4
Folding System	RZ
Vertical Reach	33m
Horizontal Reach	28.3m
Depth of Reach	20.7m
Unfold Height	5.8m
End Hose Length Max	4m
End Hose Size Max	4"
Max bearing pressure	165kN
Weight	30 tonnes
Outrigger footprint	7.2m x 6.4m
Max wind speed for operation	74km/hour

